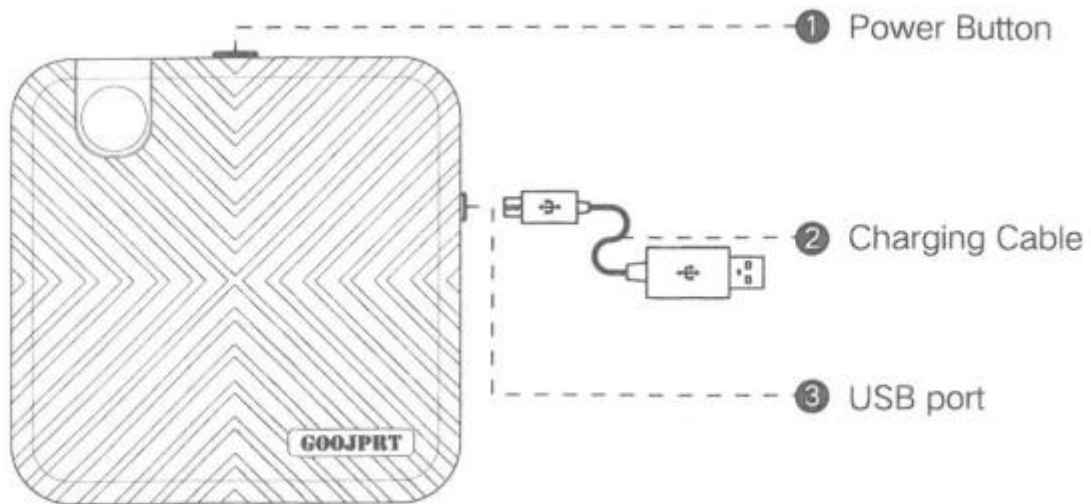


Mini portable Bluetooth thermal printer - AT0037

Instruction Manual

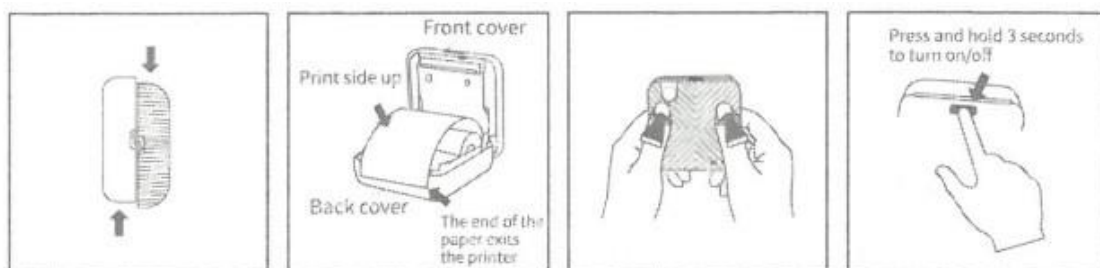
Product diagram



Power Indicator Status

- Green light on: fully charged / normal use.
- Red light on: charging / Lack of paper / Overheating / Open lid.
- Red light flashing: low power, will cause printing too clear, please charge timely.
- Orange light: has entered debugging mode. Press and hold the power button to turn off the power and exit debug mode.

Open / Close cover and change paper



1. Open the cover
2. Load the paper
3. Close the cover
4. Turn on/off (by pressing and holding for 3 or 4 seconds).

Download Windows Application / Driver

Download and Connect Printer

- APP: Scan the QR code for your corresponding platform or enter the APP store or Google play store to search for Dingdang Classmates (**Luck Jingle**).

APP for Android



APP for iOS



• Windows application / driver:

Visit the official product website:

http://www.xmjprt.com/112.html?pid=2934187&_t=1584708323 and enter the downloads tab or scan the QR code to be directed to the product's driver and software download center.



Connection

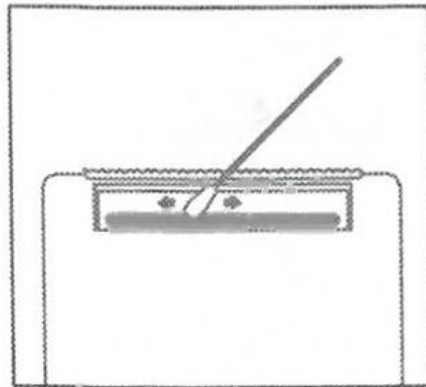
- Mobile: Log into the APPLICATION and follow the instructions to connect to the printer via Bluetooth; or double-click the power button on the printer to print the QR code and use the application to scan the QR code to connect.
- Computer: Use the USB data cable to connect the printer with the computer, install the driver and configure it properly. It can be used as a normal printer or can work with label editing software.

Loading Instructions

Charging Input

- Micro USB input interface;
- 5V 2A input charging, you can use cell phone charging adapter or connect to computer USB port to charge;
- It is recommended to fully charge the first time after purchase;
- Lithium-ion battery capacity: 1000mAh / 7.4Wh;
- Charge the printer at least once every 3 months to prevent the lithium battery from natural degradation due to long time without charging.

Cleaning the printhead



1. Turn off the printer and remove the paper inside;
2. Wipe with a cotton cloth or cotton swab with alcohol and rub gently along the center to the periphery of the print head;
3. Do not use the printer immediately after cleaning the printhead. Wait 1 to 2 minutes for the alcohol to evaporate completely.

NOTE: Do not touch the printhead directly to avoid damage, especially after printing to prevent overheating.